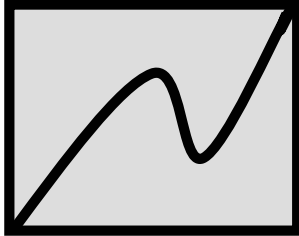


Peer into the future before it becomes the present



Summit Economics LLC

Tucker Hart Adams

Mike Anderson

Dave Bamberger

Tom Binnings

Paul Rochette

www.summiteconomics.com

Applied Economics

Springs Monthly Economic Indicators

Colorado Springs Metro Area

January 1991 - March 2012

© Summit Economics, LLC

Monthly Economic Indicators Summary, March 2012
Colorado Springs Metro Area

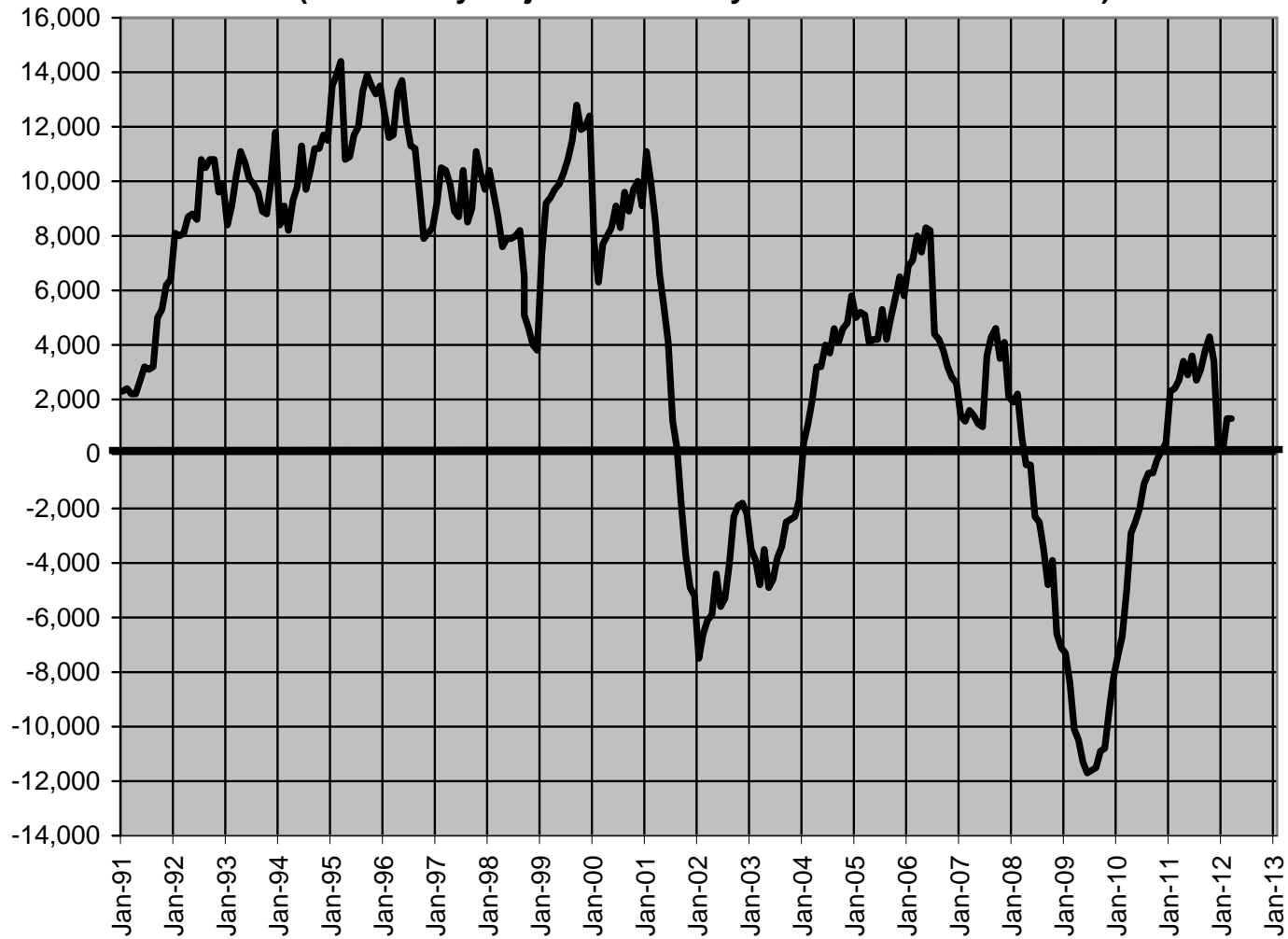
Monthly Indicator	Mar-11	Mar-12	Change	% Change	Good News Bad News
Wage and Salary Jobs	245,800	247,100	1,300	0.5%	Good News
Initial Claims for Unemployment	454	561	107	23.6%	Bad News
Unemployment Rate	10.1%	9.5%	-0.6%	-5.9%	Good News
Single Family Home Permits (units)	138	172	34	24.6%	Good News
New Auto and Truck Registrations	1,523	1,512	-11	-0.7%	Bad News
Taxable Retail Sales (in millions)	\$387.8	\$433.0	\$45.1	11.6%	Good News
Hotel Occupancy Rate	56.8%	54.1%	-2.7%	-4.8%	Bad News
Foreclosure Filings	272	275	3	1.1%	Bad News

Source: Various published sources.

Job Growth

Colorado Springs MSA, Jan 1991 - Mar 2012

(Seasonally Adjusted Monthly Data at an Annual Rate)

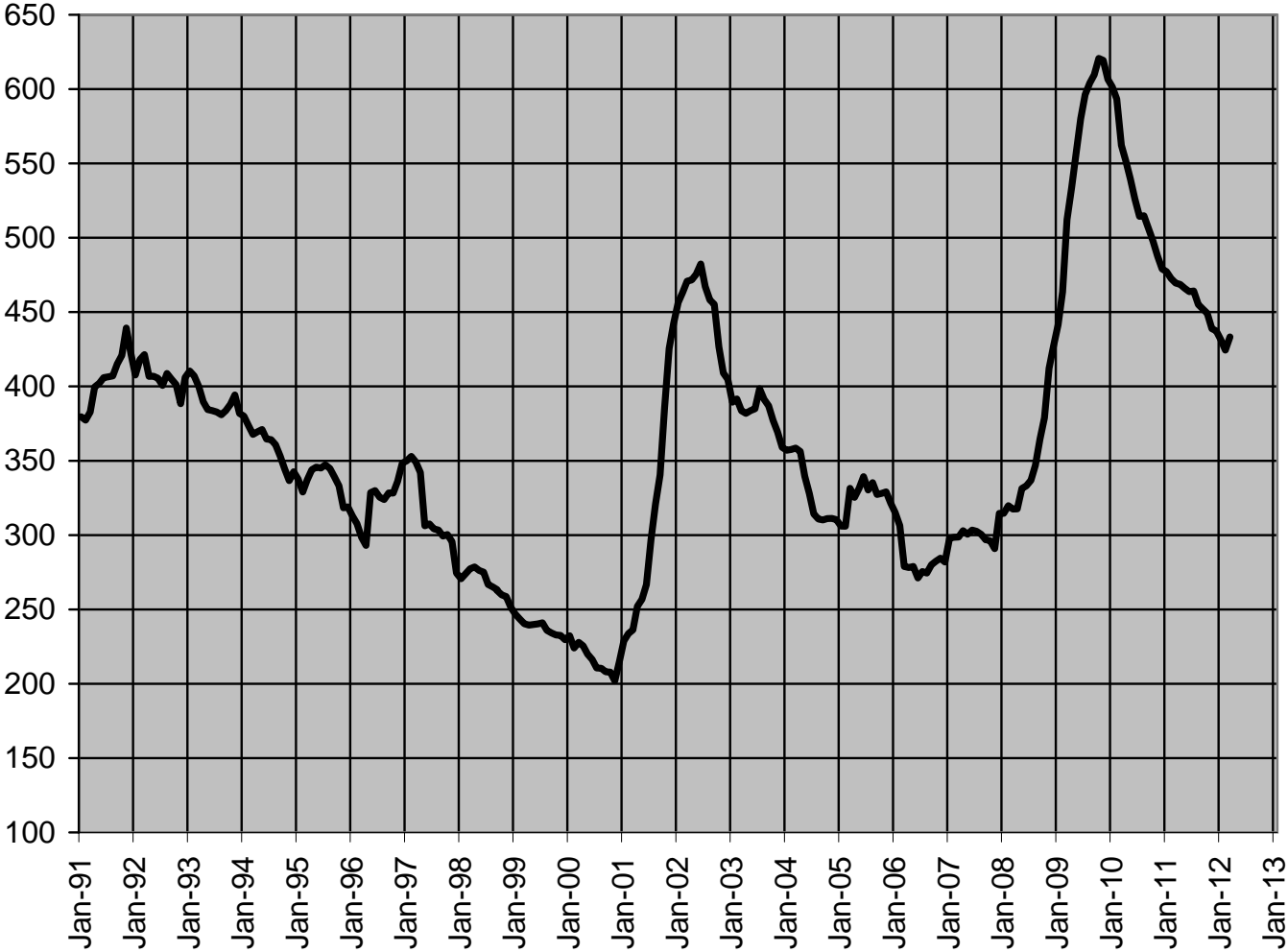


Source: Colorado Department of Labor and Employment and Summit Economics LLC

Initial Unemployment Claims

Colorado Springs MSA, Jan 1991 - Mar 2012

(Seasonally Adjusted Monthly Data)

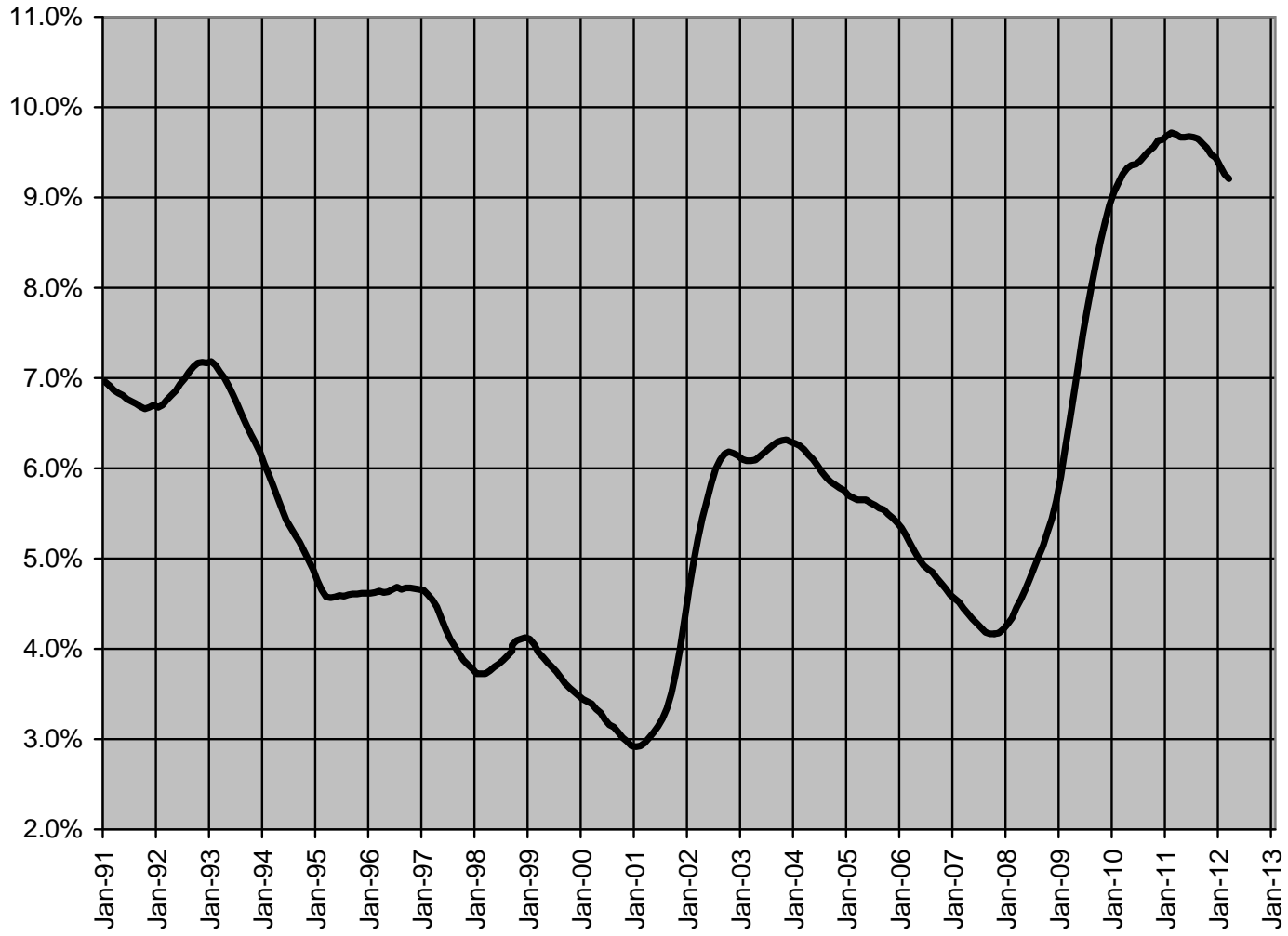


Source: Colorado Department of Labor and Employment and Summit Economics LLC

Unemployment Rate

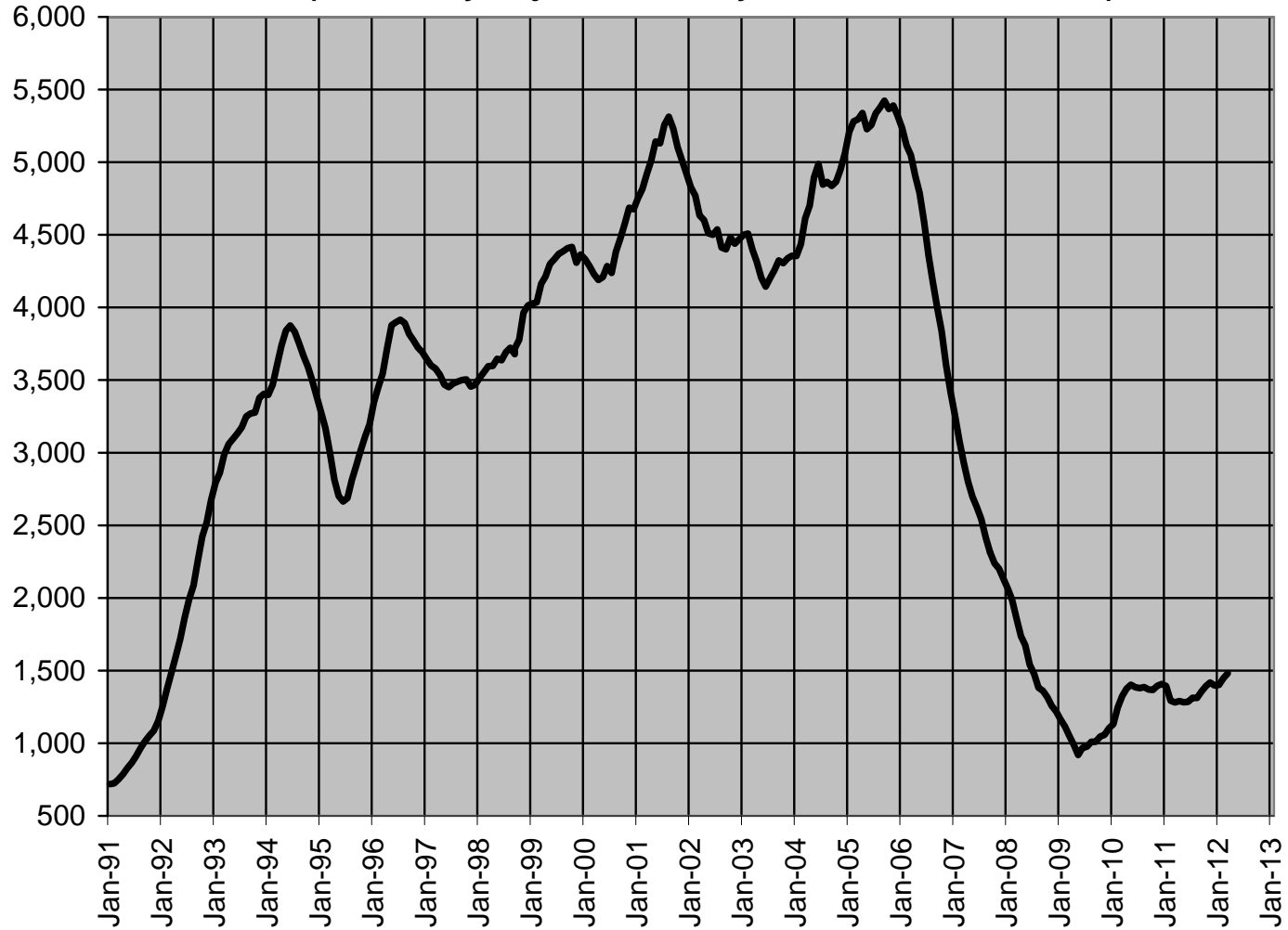
Colorado Springs MSA, Jan 1991 - Mar 2012

(Seasonally Adjusted Monthly Data)



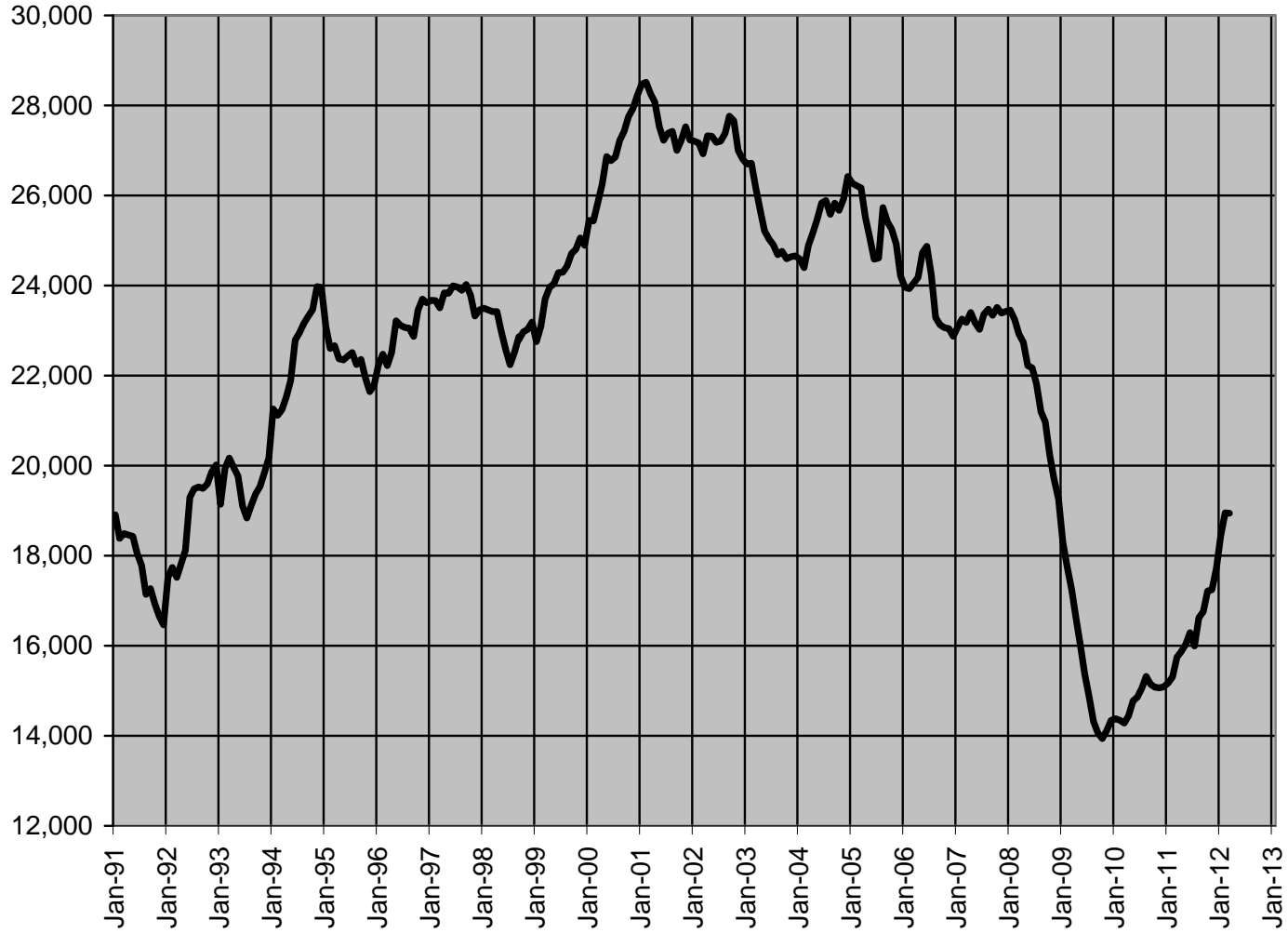
Source: Colorado Department of Labor and Employment and Summit Economics LLC

Single Family Home Permits (units)
El Paso County, Jan 1991 - Mar 2012
(Seasonally Adjusted Monthly Data at an Annual Rate)



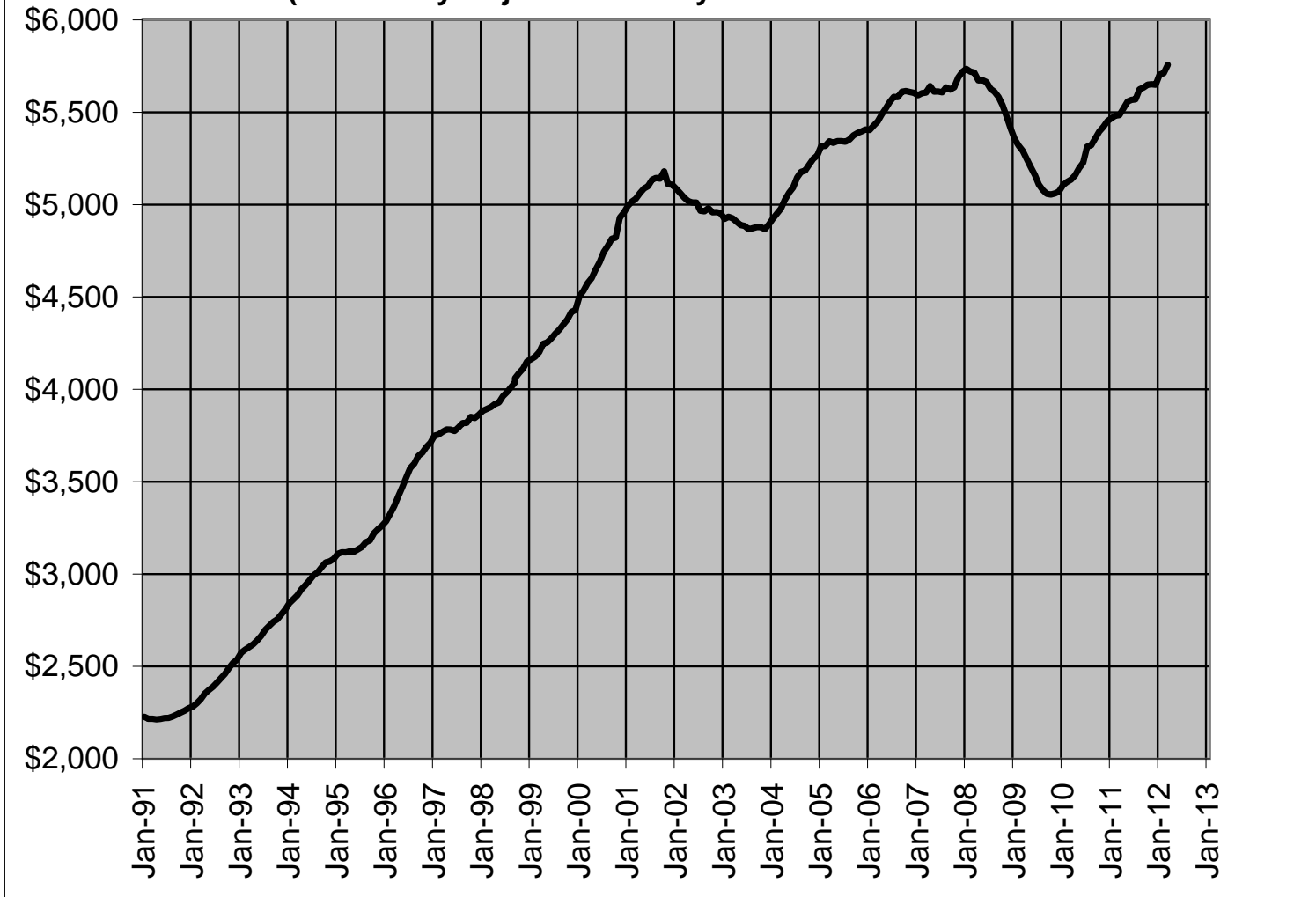
Source: Regional Building Department and Summit Economics LLC

New Car and Truck Registrations El Paso County, Jan 1991 - Mar 2012 (Seasonally Adjusted Monthly Data at an Annual Rate)



Source: El Paso County Clerk and Recorder and Summit Economics LLC

Taxable Retail Sales (in Millions)
City of Colorado Springs, Jan 1991 - Mar 2012
 (Seasonally Adjusted Monthly Data at an Annual Rate)

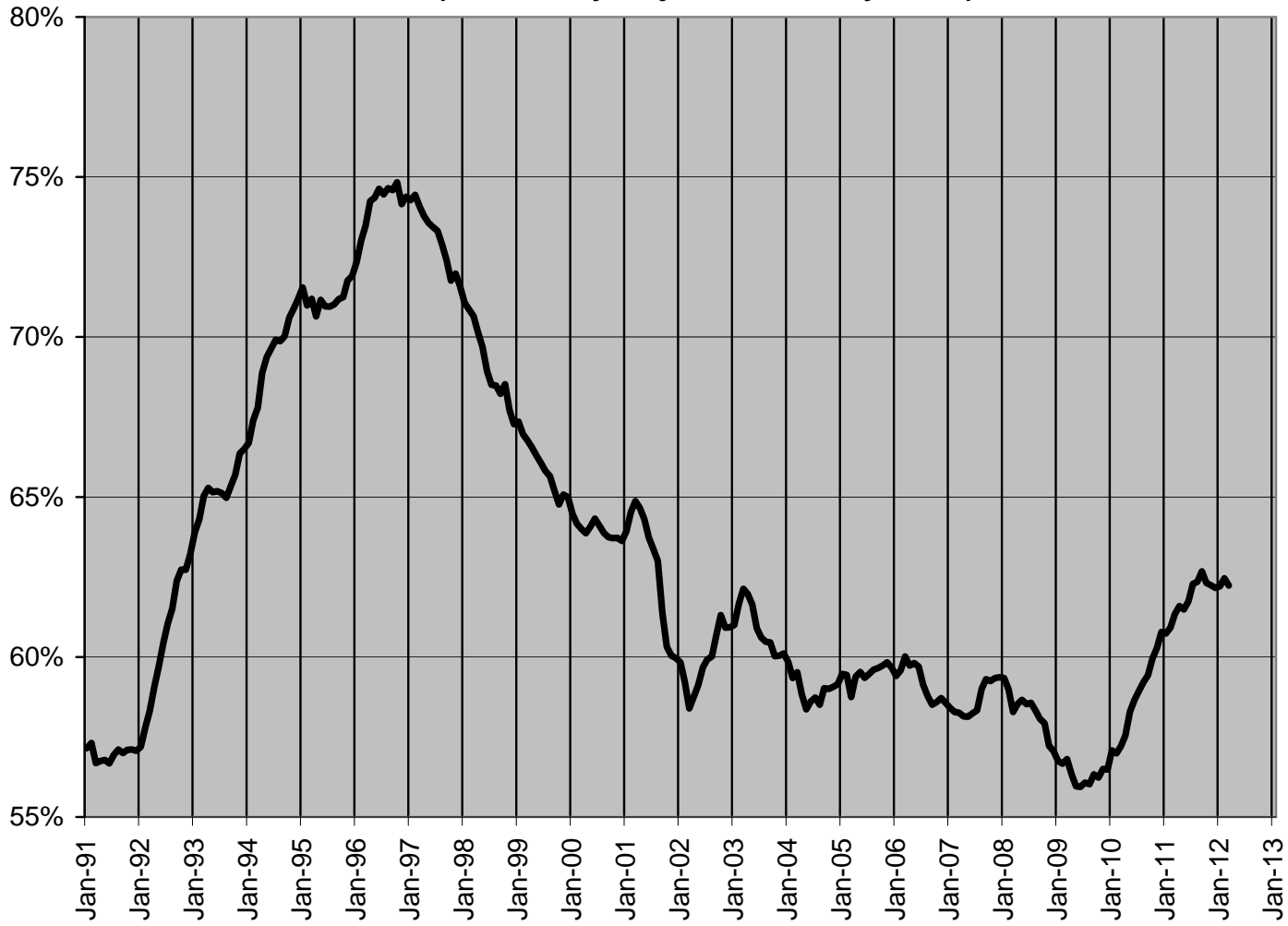


Source: City of Colorado Springs Sales Tax Office and Summit Economics LLC

Hotel Occupancy

El Paso County, Jan 1991 - Mar 2012

(Seasonally Adjusted Monthly Data)

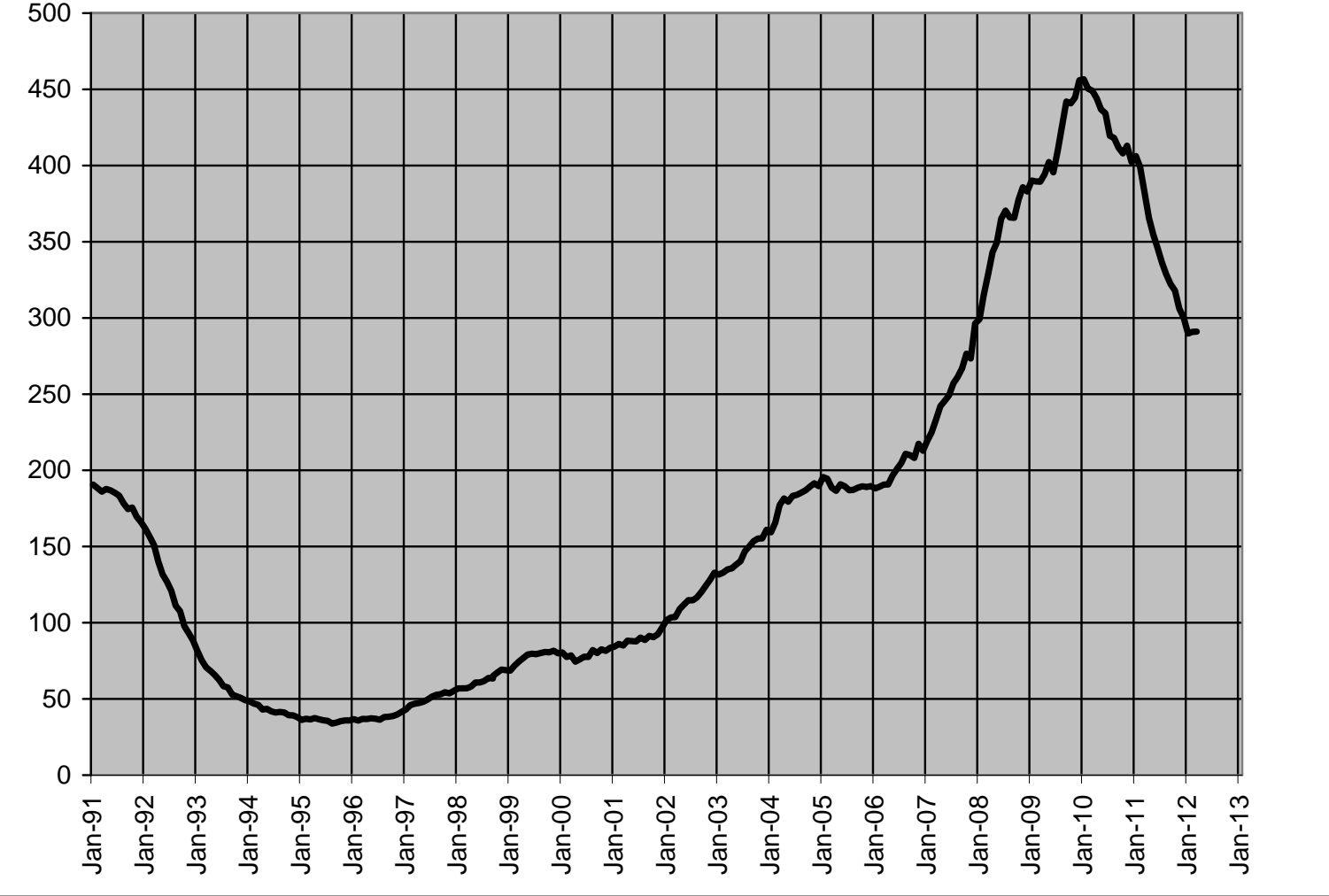


Source: Rocky Mountain Lodging Report and Summit Economics LLC

Foreclosure Filings

El Paso County, Jan 1991 - Mar 2012

(Seasonally Adjusted Monthly Data)



Source: El Paso County Trustee and Summit Economics LLC

MO-YR	Wage and Salary Job Growth			Unemployment Rate		Single Family Construction		New Auto and Truck Registrations		Taxable Retail Sales			Hotel Occupancy Rate		Initial Claims for Unemployment		Mortgage Loan Foreclosure Filings	
	Colorado Springs MSA			Colorado Springs MSA		El Paso County		El Paso County		City of Colorado Springs			El Paso County		Colorado Springs MSA		El Paso County	
	Monthly Total	Monthly Change	12 Month Moving Average at an Annual Rate	Monthly %	12 Month Moving Average	Monthly Total	12 Month Moving Average at an Annual Rate	Monthly Total	12 Month Moving Average at an Annual Rate	Monthly Total Sales Tax Revenue (Equivalent 2% Rate)	Monthly Total Taxable Retail Sales (in millions)	12 Month Moving Average at an Annual Rate	Monthly %	12 Month Moving Average %	Monthly Total	12 Month Moving Average	Monthly Total	12 Month Moving Average
Jan-90	152,000	100		8.2%		62		1,312		\$4,556,533	\$228	32.5%		419		212		
Feb-90	151,900	-100		8.1%		49		1,469		\$3,251,866	\$163	40.3%		401		217		
Mar-90	153,300	1,400		7.9%		56		1,595		\$3,040,838	\$152	51.1%		376		203		
Apr-90	154,800	1,500		6.9%		70		1,384		\$3,688,595	\$184	45.0%		386		206		
May-90	157,700	2,900		7.0%		73		1,419		\$3,394,650	\$170	61.7%		338		191		
Jun-90	160,400	2,700		7.6%		77		1,629		\$3,637,169	\$182	78.1%		312		180		
Jul-90	158,800	-1,600		6.8%		72		2,014		\$4,129,529	\$206	81.2%		373		192		
Aug-90	159,400	600		6.4%		58		2,023		\$3,792,013	\$190	84.2%		278		228		
Sep-90	158,000	-1,400		6.1%		65		1,305		\$3,946,536	\$197	69.7%		269		183		
Oct-90	159,000	1,000		6.4%		66		1,868		\$3,872,526	\$194	58.9%		340		163		
Nov-90	159,700	700		6.1%		57		1,390		\$3,570,170	\$179	46.9%		349		173		
Dec-90	159,000	-700	7,100	6.2%	7.0%	36	741	1,605	19,013	\$3,548,826	\$177	35.1%	57.1%	548	366	166	193	
Jan-91	154,300	-4,700	2,300	8.0%	7.0%	40	719	1,207	18,908	\$4,669,427	\$233	33.6%	57.2%	585	380	186	191	
Feb-91	154,300	0	2,400	7.6%	6.9%	54	724	949	18,388	\$3,036,655	\$152	42.2%	57.3%	374	377	189	188	
Mar-91	155,500	1,200	2,200	7.3%	6.9%	84	752	1,698	18,491	\$3,044,526	\$152	43.6%	56.7%	442	383	175	186	
Apr-91	157,000	1,500	2,200	6.5%	6.8%	105	787	1,354	18,461	\$3,635,312	\$182	45.8%	56.8%	588	400	227	188	
May-91	160,400	3,400	2,700	6.7%	6.8%	115	829	1,388	18,430	\$3,431,170	\$172	62.1%	56.8%	367	402	180	187	
Jun-91	163,600	3,200	3,200	7.1%	6.8%	114	866	1,249	18,050	\$3,737,174	\$187	76.8%	56.7%	358	406	161	185	
Jul-91	161,900	-1,700	3,100	6.5%	6.7%	120	914	1,747	17,783	\$4,142,098	\$207	84.4%	56.9%	379	406	170	183	
Aug-91	162,600	700	3,200	6.1%	6.7%	111	967	1,379	17,139	\$3,933,278	\$197	86.2%	57.1%	286	407	167	178	
Sep-91	163,000	400	5,000	5.7%	6.7%	112	1,014	1,437	17,271	\$4,152,252	\$208	68.4%	57.0%	365	415	138	175	
Oct-91	164,300	1,300	5,300	6.1%	6.7%	104	1,052	1,537	16,940	\$4,101,334	\$205	60.1%	57.1%	410	421	175	176	
Nov-91	165,900	1,600	6,200	6.3%	6.7%	92	1,087	1,107	16,657	\$3,773,240	\$189	47.0%	57.1%	569	439	102	170	
Dec-91	165,400	-500	6,400	6.5%	6.7%	103	1,154	1,410	16,462	\$3,813,742	\$191	34.6%	57.1%	342	422	122	166	
Jan-92	162,400	-3,000	8,100	7.7%	6.7%	140	1,254	2,266	17,521	\$4,846,178	\$242	35.1%	57.2%	412	408	136	162	
Feb-92	162,300	-100	8,000	7.9%	6.7%	175	1,375	1,166	17,738	\$3,378,699	\$169	49.5%	57.8%	499	418	125	157	
Mar-92	163,600	1,300	8,100	8.0%	6.8%	198	1,489	1,478	17,518	\$3,504,249	\$175	49.9%	58.3%	482	421	108	151	
Apr-92	165,700	2,100	8,700	7.1%	6.8%	216	1,600	1,653	17,817	\$4,225,548	\$211	54.8%	59.1%	412	407	98	140	
May-92	169,200	3,500	8,800	7.3%	6.9%	235	1,720	1,691	18,120	\$3,827,139	\$191	69.7%	59.7%	368	407	77	132	
Jun-92	172,200	3,000	8,600	8.0%	6.9%	257	1,863	2,426	19,297	\$4,097,537	\$205	85.6%	60.4%	342	406	103	127	
Jul-92	172,700	500	10,800	7.2%	7.0%	246	1,989	1,933	19,483	\$4,576,418	\$229	91.7%	61.1%	321	401	100	121	
Aug-92	173,100	400	10,500	7.0%	7.1%	208	2,086	1,422	19,526	\$4,429,223	\$221	91.7%	61.5%	383	409	50	111	
Sep-92	173,800	700	10,800	6.4%	7.1%	282	2,256	1,406	19,495	\$4,607,614	\$230	78.9%	62.4%	318	405	95	108	
Oct-92	175,100	1,300	10,800	6.6%	7.2%	272	2,424	1,636	19,594	\$4,736,610	\$237	64.3%	62.7%	368	401	58	98	
Nov-92	175,500	400	9,600	6.4%	7.2%	189	2,521	1,377	19,864	\$4,347,481	\$217	46.9%	62.7%	413	388	46	93	
Dec-92	175,300	-200	9,900	6.4%	7.2%	254	2,672	1,564	20,018	\$4,148,308	\$207	40.5%	63.2%	555	406	63	88	
Jan-93	170,800	-4,500	8,400	7.9%	7.2%	261	2,793	1,389	19,141	\$5,587,319	\$279	43.3%	63.9%	463	410	55	82	
Feb-93	171,400	600	9,100	7.4%	7.1%	244	2,862	1,961	19,936	\$3,718,562	\$186	54.3%	64.3%	460	407	50	75	
Mar-93	173,800	2,400	10,200	7.1%	7.1%	325	2,989	1,711	20,169	\$3,792,838	\$190	58.8%	65.0%	396	400	54	71	
Apr-93	176,800	3,000	11,100	6.3%	7.0%	287	3,060	1,441	19,957	\$4,532,793	\$227	57.7%	65.3%	290	390	70	68	
May-93	179,900	3,100	10,700	6.2%	6.9%	271	3,096	1,498	19,764	\$4,233,957	\$212	68.1%	65.2%	304	384	45	66	
Jun-93	182,300	2,400	10,100	6.8%	6.8%	294	3,133	1,771	19,109	\$4,608,933	\$230	86.0%	65.2%	334	384	64	63	
Jul-93	182,600	300	9,900	5.9%	6.7%	288	3,175	1,659	18,835	\$5,225,467	\$261	91.0%	65.1%	309	383	50	58	
Aug-93	182,700	100	9,600	5.6%	6.6%	283	3,250	1,711	19,124	\$4,857,243	\$243	89.9%	65.0%	361	381	41	58	
Sep-93	182,700	0	8,900	5.1%	6.5%	302	3,270	1,655	19,373	\$5,028,482	\$251	83.2%	65.3%	352	384	38	53	
Oct-93	183,900	1,200	8,800	5.4%	6.4%	279	3,277	1,803	19,540	\$5,013,288	\$251	68.7%	65.7%	418	388	45	52	
Nov-93	185,500	1,600	10,000	5.3%	6.3%	291	3,379	1,682	19,845	\$4,887,421	\$244	54.8%	66.4%	489	394	33	51	
Dec-93	187,100	1,600	11,800	5.2%	6.2%	280	3,405	1,891	20,172	\$4,696,888	\$235	42.2%	66.5%	407	382	45	49	
Jan-94	179,200	-7,900	8,400	6.3%	6.1%	254	3,398	2,476	21,259	\$6,261,287	\$313	45.6%	66.7%	440	380	46	48	
Feb-94	180,500	1,300	9,100	6.0%	5.9%	315	3,469	1,821	21,119	\$4,143,437	\$207	62.7%	67.4%	386	374	32	47	
Mar-94	182,000	1,500	8,200	5.6%	5.8%	459	3,603	1,835	21,243	\$4,210,238	\$211	63.6%	67.8%	323	368	44	46	
Apr-94	186,100	4,100	9,300	4.7%	5.7%	422	3,738	1,732	21,534	\$5,200,735	\$260	70.8%	68.9%	311	370	34	43	
May-94	189,700	3,600	9,800	4.7%	5.6%	374	3,841	1,863	21,899	\$4,688,475	\$234	74.0%	69.4%	322	371	50	44	
Jun-94	193,600	3,900	11,300	5.3%	5.4%	329	3,876	2,661	22,789	\$5,108,240	\$255	89.2%	69.6%	257	365	44	42	
Jul-94	192,300	-1,300	9,700	4.9%	5.3%	245	3,833	1,823	22,953	\$5,769,229	\$288	94.2%	69.9%	304	364	41	41	
Aug-94	193,100	800	10,400	4.6%	5.3%	201	3,751	1,921	23,163	\$5,174,846	\$259	89.4%	69.9%	320	361	45	41	
Sep-94	193,900	800	11,200	4.2%	5.2%	218	3,667	1,812	23,320	\$5,579,535	\$279	85.1%	70.0%	261	353	34	41	
Oct-94	195,100	1,200	11,200	4.2%	5.1%	203	3,591	1,948	23,465	\$5,542,070	\$277	75.6%	70.6%	315	345	24	39	
Nov-94	197,200	2,100	11,700	4.1%	5.0%	196	3,496	2,195	23,978	\$4,992,792	\$250	58.2%	70.9%	394	337	32	39	
Dec-94	198,600	1,400	11,500	4.0%	4.9%	171	3,387	1,869	23,956	\$4,961,507	\$248	46.0%	71.2%	478	343	30	38	
Jan-95	192,700	-5,900	13,500	4.8%	4.8%	144	3,277	1,611	23,091	\$6,810,329	\$341	49.8%	71.6%	381	338	25	36	

MO-YR	Wage and Salary Job Growth			Unemployment Rate		Single Family Construction		New Auto and Truck Registrations		Taxable Retail Sales			Hotel Occupancy Rate		Initial Claims for Unemployment		Mortgage Loan Foreclosure Filings	
	Colorado Springs MSA			Colorado Springs MSA		El Paso County		El Paso County		City of Colorado Springs			El Paso County		Colorado Springs MSA		El Paso County	
	Monthly Total	Monthly Change	12 Month Moving Average at an Annual Rate	Monthly %	12 Month Moving Average	Monthly Total	12 Month Moving Average at an Annual Rate	Monthly Total	12 Month Moving Average at an Annual Rate	Monthly Total Sales Tax Revenue (Equivalent 2% Rate)	Monthly Total Taxable Retail Sales (in millions)	12 Month Moving Average at an Annual Rate	Monthly %	12 Month Moving Average %	Monthly Total	12 Month Moving Average	Monthly Total	12 Month Moving Average
Feb-95	194,400	1,700	13,900	4.7%	4.7%	206	3,168	1,332	22,602	\$4,318,223	\$216	\$3,118	55.9%	71.0%	282	329	41	37
Mar-95	196,400	2,000	14,400	4.7%	4.6%	292	3,001	1,896	22,663	\$4,200,921	\$210	\$3,117	66.1%	71.2%	421	337	38	37
Apr-95	196,900	500	10,800	4.6%	4.6%	235	2,814	1,442	22,373	\$5,316,198	\$266	\$3,123	64.2%	70.6%	392	344	46	38
May-95	200,600	3,700	10,900	4.8%	4.6%	262	2,702	1,836	22,346	\$4,645,545	\$232	\$3,121	80.2%	71.2%	344	346	40	37
Jun-95	205,300	4,700	11,700	5.5%	4.6%	291	2,664	2,748	22,433	\$5,369,130	\$268	\$3,134	86.8%	71.0%	249	345	36	36
Jul-95	204,300	-1,000	12,000	4.8%	4.6%	269	2,688	1,902	22,512	\$6,022,316	\$301	\$3,147	94.1%	71.0%	330	347	36	36
Aug-95	206,400	2,100	13,300	4.8%	4.6%	326	2,813	1,652	22,243	\$5,694,886	\$285	\$3,173	90.2%	71.0%	291	345	24	34
Sep-95	207,800	1,400	13,900	4.3%	4.6%	319	2,914	1,929	22,360	\$5,769,205	\$288	\$3,182	87.1%	71.2%	193	339	42	35
Oct-95	208,600	800	13,500	4.2%	4.6%	305	3,016	1,549	21,961	\$6,328,919	\$316	\$3,221	76.3%	71.2%	242	333	35	35
Nov-95	210,400	1,800	13,200	4.2%	4.6%	292	3,112	1,877	21,643	\$5,438,708	\$272	\$3,244	64.5%	71.8%	217	318	38	36
Dec-95	212,100	1,700	13,500	4.0%	4.6%	255	3,196	2,010	21,784	\$5,328,470	\$266	\$3,262	47.7%	71.9%	485	319	30	36
Jan-96	205,200	-6,900	12,500	4.8%	4.6%	295	3,347	2,072	22,245	\$7,289,469	\$364	\$3,286	55.0%	72.3%	307	313	35	37
Feb-96	206,000	800	11,600	4.8%	4.6%	311	3,452	1,563	22,476	\$5,094,441	\$255	\$3,325	64.0%	73.0%	221	308	30	36
Mar-96	208,100	2,100	11,700	4.9%	4.6%	384	3,544	1,641	22,221	\$5,048,624	\$252	\$3,367	71.7%	73.5%	311	299	51	37
Apr-96	210,200	2,100	13,300	4.4%	4.6%	410	3,719	1,734	22,513	\$6,377,290	\$319	\$3,420	73.4%	74.3%	327	293	45	37
May-96	214,300	4,100	13,700	4.9%	4.6%	421	3,878	2,539	23,216	\$5,627,971	\$281	\$3,469	81.4%	74.4%	770	329	45	37
Jun-96	217,500	3,200	12,200	5.8%	4.7%	311	3,898	2,649	23,117	\$6,452,563	\$323	\$3,524	90.2%	74.6%	265	330	33	37
Jul-96	215,600	-1,900	11,300	5.1%	4.7%	287	3,916	1,854	23,069	\$7,021,589	\$351	\$3,574	92.0%	74.5%	277	326	28	36
Aug-96	217,600	2,000	11,200	4.5%	4.7%	302	3,892	1,639	23,056	\$6,192,149	\$310	\$3,598	92.5%	74.7%	272	324	45	38
Sep-96	217,400	-200	9,600	4.5%	4.7%	244	3,817	1,744	22,871	\$6,596,830	\$330	\$3,640	86.4%	74.6%	247	328	45	38
Oct-96	216,500	-900	7,900	4.2%	4.7%	260	3,772	2,128	23,450	\$6,667,763	\$333	\$3,657	79.2%	74.8%	240	328	40	39
Nov-96	218,500	2,000	8,100	4.1%	4.7%	244	3,724	2,125	23,698	\$6,066,630	\$303	\$3,688	56.3%	74.2%	313	336	50	40
Dec-96	220,400	1,900	8,300	3.9%	4.7%	223	3,692	1,928	23,616	\$5,772,045	\$289	\$3,710	50.5%	74.4%	631	348	52	42
Jan-97	214,400	-6,000	9,200	4.7%	4.7%	247	3,644	2,128	23,672	\$8,070,731	\$404	\$3,749	53.7%	74.3%	326	350	52	43
Feb-97	216,500	2,100	10,500	4.2%	4.6%	268	3,601	1,556	23,665	\$5,211,720	\$261	\$3,755	66.0%	74.4%	256	353	65	46
Mar-97	218,500	2,000	10,400	4.2%	4.5%	362	3,579	1,480	23,504	\$5,339,447	\$267	\$3,770	67.4%	74.1%	267	349	62	47
Apr-97	220,100	1,600	9,900	3.5%	4.5%	366	3,535	2,067	23,837	\$6,639,761	\$332	\$3,783	69.7%	73.8%	241	342	51	47
May-97	223,200	3,100	8,900	3.4%	4.3%	355	3,469	2,531	23,829	\$5,610,372	\$281	\$3,782	78.9%	73.6%	340	306	55	48
Jun-97	226,200	3,000	8,700	4.3%	4.2%	293	3,451	2,813	23,993	\$6,292,223	\$315	\$3,774	88.6%	73.4%	280	308	51	50
Jul-97	226,000	-200	10,400	3.8%	4.1%	312	3,476	1,827	23,966	\$7,433,305	\$372	\$3,795	90.6%	73.3%	237	304	50	52
Aug-97	226,100	100	8,500	3.6%	4.0%	315	3,489	1,568	23,895	\$6,640,310	\$332	\$3,817	87.3%	72.9%	263	303	60	53
Sep-97	226,400	300	9,000	3.5%	4.0%	255	3,500	1,873	24,024	\$6,625,308	\$331	\$3,818	80.6%	72.4%	198	299	49	53
Oct-97	227,600	1,200	11,100	3.3%	3.9%	265	3,505	1,885	23,781	\$7,309,965	\$365	\$3,851	71.5%	71.8%	253	300	56	54
Nov-97	228,800	1,200	10,300	3.5%	3.8%	194	3,455	1,665	23,321	\$5,950,954	\$298	\$3,845	59.0%	72.0%	256	296	41	54
Dec-97	230,100	1,300	9,700	3.4%	3.8%	236	3,468	2,064	23,457	\$6,122,983	\$306	\$3,862	45.8%	71.6%	376	274	72	55
Jan-98	224,800	-5,300	10,400	4.0%	3.7%	293	3,514	2,168	23,497	\$8,486,073	\$424	\$3,883	47.4%	71.1%	280	271	71	57
Mar-98	225,200	400	8,700	4.2%	3.7%	350	3,596	1,482	23,423	\$5,633,716	\$282	\$3,904	61.0%	70.7%	337	277	66	57
Apr-98	226,100	900	7,600	4.6%	3.8%	364	3,598	1,480	23,423	\$5,652,021	\$283	\$3,920	61.3%	70.1%	282	279	75	58
May-98	228,000	1,900	7,900	4.0%	3.8%	415	3,647	1,624	22,980	\$6,817,660	\$341	\$3,929	64.3%	69.7%	213	276	84	61
Jun-98	231,100	3,100	7,900	3.8%	3.8%	344	3,636	2,127	22,576	\$6,291,711	\$315	\$3,963	69.8%	68.9%	326	275	55	61
Jul-98	234,200	3,100	8,000	4.8%	3.9%	350	3,693	2,477	22,240	\$6,730,818	\$337	\$3,985	83.5%	68.5%	181	267	62	62
Aug-98	234,200	0	8,200	4.4%	3.9%	341	3,722	2,105	22,518	\$7,963,671	\$398	\$4,011	90.3%	68.5%	217	265	74	64
Sep-98	232,600	-1,600	6,500	4.2%	4.0%	271	3,678	1,912	22,862	\$7,168,418	\$358	\$4,038	84.2%	68.2%	241	263	56	63
Sep-98	231,500	-1,100	5,100	4.3%	4.0%	294	3,717	1,809	22,798	\$7,076,584	\$354	\$4,060	80.9%	68.3%	190	263	68	65
Oct-98	232,200	700	4,600	3.9%	4.1%	327	3,779	2,060	22,973	\$7,868,934	\$393	\$4,088	74.8%	68.5%	218	260	82	67
Nov-98	232,800	600	4,000	3.7%	4.1%	380	3,965	1,717	23,025	\$6,425,238	\$321	\$4,112	49.3%	67.7%	243	259	66	69
Dec-98	233,900	1,100	3,800	3.6%	4.1%	285	4,014	2,230	23,191	\$6,915,394	\$346	\$4,152	40.5%	67.3%	289	251	68	69
Jan-99	232,100	-1,800	7,300	3.8%	4.1%	306	4,027	1,731	22,754	\$8,720,907	\$436	\$4,163	48.4%	67.4%	226	247	66	69
Feb-99	234,400	2,300	9,200	3.5%	4.1%	358	4,035	1,818	23,090	\$5,910,846	\$296	\$4,177	56.3%	67.0%	296	244	106	72
Mar-99	235,500	1,100	9,400	3.5%	4.0%	492	4,163	2,095	23,705	\$6,134,562	\$307	\$4,201	58.9%	66.8%	245	240	108	75
Apr-99	237,700	2,200	9,700	3.4%	3.9%	465	4,213	1,878	23,959	\$7,711,057	\$386	\$4,246	61.7%	66.6%	201	239	110	77
May-99	241,000	3,300	9,900	3.1%	3.9%	430	4,299	2,209	24,041	\$6,449,557	\$322	\$4,254	66.7%	66.3%	331	240	83	79
Jun-99	244,500	3,500	10,300	4.2%	3.8%	384	4,333	2,723	24,287	\$7,170,639	\$359	\$4,276	80.7%	66.1%	186	240	69	80
Jul-99	245,000	500	10,800	3.8%	3.8%	376	4,368	2,113	24,295	\$8,464,777	\$423	\$4,301	87.4%	65.8%	226	241	71	79
Aug-99	244,100	-900	11,500	3.4%	3.7%	290	4,387	2,047	24,430	\$7,623,261	\$381	\$4,324	82.2%	65.7%	180	236	65	80
Sep-99	244,300	200	12,800	3.5%	3.6%	315	4,408	2,089	24,710	\$7,612,686	\$381	\$4,350	75.5%	65.2%	169	234	75	81
Oct-99	244,100	-200	11,900	3.3%	3.6%	335	4,416	2,153	24,803	\$8,421,916	\$421	\$4,378	69.6%	64.8%	202	233	80	81
Nov-99	244,800	700	12,000	3.2%	3.5%	272	4,308	1,971	25,057	\$7,254,478	\$363	\$4,420	53.0%	65.1%	239	233	78	82
Dec-99	246,300	1,500	12,400	3.1%	3.5%	341	4,364	2,064	24,891	\$7,089,285	\$354	\$4,428	39.5%	65.0%	254	230	48	80
Jan-00	239,900	-6,400	7,800	3.3%	3.4%	274	4,332	2,285	25,445	\$10,242,615	\$512	\$4,504	42.2%	64.5%	259	232	73	81
Feb-00	240,700	800	6,300	3.2%	3.4%	310	4,284	1,809	25,436	\$6,511,290	\$326	\$4,534	52.5%	64.2%	196	224	70	78

MO-YR	Wage and Salary Job Growth			Unemployment Rate		Single Family Construction		New Auto and Truck Registrations		Taxable Retail Sales			Hotel Occupancy Rate		Initial Claims for Unemployment		Mortgage Loan Foreclosure Filings	
	Colorado Springs MSA			Colorado Springs MSA		El Paso County		El Paso County		City of Colorado Springs			El Paso County		Colorado Springs MSA		El Paso County	
	Monthly Total	Monthly Change	12 Month Moving Average at an Annual Rate	Monthly %	12 Month Moving Average	Monthly Total	12 Month Moving Average at an Annual Rate	Monthly Total	12 Month Moving Average at an Annual Rate	Monthly Total Sales Tax Revenue (Equivalent 2% Rate)	Monthly Total Taxable Retail Sales (in millions)	12 Month Moving Average at an Annual Rate	Monthly %	12 Month Moving Average %	Monthly Total	12 Month Moving Average	Monthly Total	12 Month Moving Average
Mar-00	243,200	2,500	7,700	3.2%	3.4%	437	4,229	2,505	25,846	\$6,926,964	\$346	\$4,574	57.0%	64.0%	292	228	120	79
Apr-00	245,700	2,500	8,000	2.7%	3.3%	426	4,190	2,283	26,251	\$8,271,051	\$414	\$4,602	60.1%	63.9%	172	226	62	75
May-00	249,300	3,600	8,300	2.6%	3.3%	449	4,209	2,823	26,865	\$7,365,152	\$368	\$4,648	69.2%	64.1%	264	220	100	76
Jun-00	253,600	4,300	9,100	3.3%	3.2%	460	4,285	2,632	26,774	\$7,993,154	\$400	\$4,689	83.7%	64.3%	142	216	91	78
Jul-00	253,300	-300	8,300	3.1%	3.2%	329	4,238	2,194	26,855	\$9,560,802	\$478	\$4,744	84.7%	64.1%	159	211	68	78
Aug-00	253,700	400	9,600	3.1%	3.1%	436	4,384	2,415	27,223	\$8,263,770	\$413	\$4,776	79.5%	63.9%	177	210	120	82
Sep-00	253,200	-500	8,900	2.8%	3.1%	407	4,476	2,293	27,427	\$8,407,106	\$420	\$4,815	73.9%	63.7%	140	208	51	80
Oct-00	253,800	600	9,700	2.6%	3.0%	437	4,578	2,478	27,752	\$8,538,456	\$427	\$4,821	69.3%	63.7%	200	208	110	83
Nov-00	254,800	1,000	10,000	2.7%	3.0%	380	4,686	2,150	27,931	\$9,414,579	\$471	\$4,929	53.1%	63.7%	168	202	65	82
Dec-00	255,400	600	9,100	2.5%	2.9%	331	4,676	2,353	28,220	\$7,646,402	\$382	\$4,957	38.3%	63.6%	411	215	73	84
Jan-01	251,000	-4,400	11,100	3.2%	2.9%	352	4,754	2,538	28,473	\$10,958,074	\$548	\$4,993	45.8%	63.9%	425	229	82	84
Feb-01	250,700	-300	10,000	3.3%	2.9%	371	4,815	1,851	28,515	\$6,988,123	\$349	\$5,017	59.8%	64.5%	255	234	91	86
Mar-01	251,800	1,100	8,600	3.6%	3.0%	541	4,919	2,251	28,261	\$7,229,270	\$361	\$5,032	61.1%	64.9%	322	236	108	85
Apr-01	252,300	500	6,600	3.4%	3.0%	517	5,010	2,094	28,072	\$8,871,442	\$444	\$5,062	57.4%	64.7%	362	252	100	88
May-01	254,700	2,400	5,400	3.3%	3.1%	581	5,142	2,280	27,529	\$7,880,574	\$394	\$5,088	65.0%	64.3%	321	257	96	88
Jun-01	257,700	3,000	4,100	4.1%	3.1%	448	5,130	2,328	27,225	\$8,235,444	\$412	\$5,100	76.9%	63.7%	261	267	89	88
Jul-01	254,500	-3,200	1,200	4.1%	3.2%	456	5,257	2,353	27,384	\$10,257,906	\$513	\$5,135	80.3%	63.4%	522	297	98	90
Aug-01	253,900	-600	200	4.5%	3.3%	492	5,313	2,455	27,424	\$8,455,945	\$423	\$5,144	75.1%	63.0%	462	321	101	89
Sep-01	251,300	-2,600	-1,900	4.8%	3.5%	324	5,230	1,871	27,002	\$8,330,519	\$417	\$5,140	54.3%	61.4%	378	341	83	91
Oct-01	250,100	-1,200	-3,700	5.3%	3.7%	310	5,103	2,695	27,219	\$9,338,946	\$467	\$5,180	56.7%	60.3%	736	385	101	91
Nov-01	249,900	-200	-4,900	6.0%	4.0%	288	5,011	2,459	27,528	\$8,016,712	\$401	\$5,110	49.8%	60.0%	650	425	88	93
Dec-01	250,200	300	-5,200	6.4%	4.3%	244	4,924	2,057	27,232	\$7,601,051	\$380	\$5,108	37.4%	60.0%	614	442	128	97
Jan-02	243,500	-6,700	-7,500	7.2%	4.7%	256	4,828	2,512	27,206	\$10,493,976	\$525	\$5,085	44.2%	59.8%	594	456	138	102
Feb-02	244,100	600	-6,600	6.7%	5.0%	313	4,770	1,812	27,167	\$6,534,736	\$327	\$5,062	52.4%	59.2%	337	463	111	103
Mar-02	245,700	1,600	-6,100	6.8%	5.2%	404	4,633	2,010	26,926	\$6,717,511	\$336	\$5,037	51.2%	58.4%	413	471	112	104
Apr-02	246,400	700	-5,900	6.2%	5.5%	485	4,601	2,495	27,327	\$8,511,158	\$426	\$5,019	61.9%	58.8%	372	472	163	109
May-02	250,300	3,900	-4,400	5.5%	5.6%	490	4,510	2,269	27,316	\$7,722,818	\$386	\$5,011	69.4%	59.1%	366	475	131	112
Jun-02	252,100	1,800	-5,600	6.4%	5.8%	438	4,500	2,193	27,181	\$8,243,581	\$412	\$5,011	83.4%	59.7%	344	482	124	115
Jul-02	249,200	-2,900	-5,300	6.1%	6.0%	493	4,537	2,380	27,208	\$9,370,355	\$469	\$4,967	83.3%	59.9%	340	467	96	115
Aug-02	249,900	700	-4,000	5.7%	6.1%	367	4,412	2,627	27,380	\$8,387,318	\$419	\$4,963	76.2%	60.0%	354	458	125	117
Sep-02	249,000	-900	-2,300	5.6%	6.2%	312	4,400	2,254	27,763	\$8,677,171	\$434	\$4,981	62.3%	60.7%	342	455	125	120
Oct-02	248,200	-800	-1,900	5.6%	6.2%	392	4,482	2,592	27,660	\$8,893,145	\$445	\$4,958	64.2%	61.3%	393	427	150	124
Nov-02	248,100	-100	-1,800	5.8%	6.2%	245	4,439	1,800	27,001	\$8,028,961	\$401	\$4,959	45.1%	60.9%	440	409	135	128
Dec-02	248,000	-100	-2,200	6.1%	6.1%	275	4,470	1,866	26,810	\$7,507,942	\$375	\$4,954	37.5%	60.9%	563	405	184	133
Jan-03	240,000	-8,000	-3,500	6.7%	6.1%	286	4,500	2,398	26,696	\$9,854,695	\$493	\$4,922	45.1%	61.0%	409	389	123	132
Feb-03	240,200	200	-3,900	6.5%	6.1%	321	4,508	1,833	26,717	\$6,766,018	\$338	\$4,934	60.2%	61.7%	363	392	126	133
Mar-03	240,900	700	-4,800	6.8%	6.1%	293	4,397	1,466	26,173	\$6,555,245	\$328	\$4,926	57.0%	62.1%	318	384	138	135
Apr-03	242,900	2,000	-3,500	6.3%	6.1%	402	4,314	2,002	25,680	\$8,124,814	\$406	\$4,907	59.9%	62.0%	351	382	171	136
May-03	245,400	2,500	-4,900	6.0%	6.1%	381	4,205	1,804	25,215	\$7,366,525	\$368	\$4,889	65.5%	61.6%	388	384	161	138
Jun-03	247,500	2,100	-4,600	6.9%	6.2%	377	4,144	2,013	25,035	\$8,162,790	\$408	\$4,885	74.5%	60.9%	358	385	150	140
Jul-03	245,400	-2,100	-3,800	6.6%	6.2%	550	4,201	2,251	24,906	\$9,006,492	\$450	\$4,867	79.8%	60.6%	503	399	175	147
Aug-03	246,500	1,100	-3,400	6.2%	6.3%	423	4,257	2,406	24,685	\$8,503,604	\$425	\$4,872	74.6%	60.5%	269	391	162	150
Sep-03	246,500	0	-2,500	6.0%	6.3%	378	4,323	2,330	24,761	\$8,790,403	\$440	\$4,878	62.1%	60.5%	288	387	167	154
Oct-03	245,800	-700	-2,400	5.8%	6.3%	374	4,305	2,427	24,596	\$8,893,019	\$445	\$4,878	59.0%	60.0%	275	377	171	155
Nov-03	245,800	0	-2,300	5.9%	6.3%	279	4,339	1,842	24,638	\$7,808,377	\$390	\$4,867	45.3%	60.0%	347	369	136	155
Dec-03	246,300	500	-1,700	5.8%	6.3%	292	4,356	1,886	24,658	\$8,005,053	\$400	\$4,892	38.3%	60.1%	439	359	252	161
Jan-04	240,400	-5,900	400	6.5%	6.3%	284	4,354	2,332	24,592	\$10,493,780	\$525	\$4,924	41.9%	59.8%	386	357	103	159
Feb-04	241,300	900	1,100	6.2%	6.3%	404	4,437	1,639	24,398	\$7,317,295	\$366	\$4,951	54.2%	59.3%	369	358	201	166
Mar-04	242,900	1,600	2,000	6.3%	6.2%	470	4,614	1,957	24,889	\$7,100,383	\$355	\$4,979	59.2%	59.5%	329	359	277	177
Apr-04	246,100	3,200	3,200	5.6%	6.2%	489	4,701	2,282	25,169	\$9,096,494	\$455	\$5,027	51.7%	58.8%	324	356	224	182
May-04	248,600	2,500	3,200	5.4%	6.1%	575	4,895	2,107	25,472	\$8,109,375	\$405	\$5,064	59.8%	58.4%	189	340	135	179
Jun-04	251,500	2,900	4,000	6.1%	6.0%	470	4,988	2,377	25,836	\$8,706,242	\$435	\$5,092	77.4%	58.6%	217	328	195	183
Jul-04	249,100	-2,400	3,700	5.7%	6.0%	408	4,846	2,304	25,889	\$10,114,278	\$506	\$5,147	81.3%	58.7%	339	314	185	184
Aug-04	251,100	2,000	4,600	5.5%	5.9%	441	4,864	2,096	25,579	\$9,103,501	\$455	\$5,177	71.9%	58.5%	228	311	178	185
Sep-04	250,600	-500	4,100	5.4%	5.9%	351	4,837	2,582	25,831	\$8,927,527	\$446	\$5,184	68.3%	59.0%	280	310	186	187
Oct-04	250,400	-200	4,600	5.4%	5.8%	402	4,865	2,267	25,671	\$9,550,474	\$478	\$5,217	58.7%	59.0%	287	311	200	189
Nov-04	250,600	200	4,800	5.5%	5.8%	362	4,948	2,093	25,922	\$8,418,786	\$421	\$5,247	46.1%	59.1%	348	311	162	192
Dec-04	252,100	1,500	5,800	5.5%	5.8%	405	5,061	2,386	26,422	\$8,380,476	\$419	\$5,266	39.3%	59.2%	429	310	229	190
Jan-05	245,400	-6,700	5,000	5.8%	5.7%	432	5,209	2,182	26,272	\$11,521,287	\$576	\$5,317	45.8%	59.5%	334	306	175	196
Feb-05	246,500	1,100	5,200	5.9%	5.7%	476	5,281	1,586	26,219	\$7,316,135	\$366	\$5,317	53.8%	59.4%	368	306	187	194
Mar-05	248,000	1,500	5,100	6.0%	5.7%	485	5,296	1,905	26,167	\$7,609,122	\$380	\$5,343	50.9%	58.8%	634	331	207	189

MO-YR	Wage and Salary Job Growth			Unemployment Rate		Single Family Construction		New Auto and Truck Registrations		Taxable Retail Sales			Hotel Occupancy Rate		Initial Claims for Unemployment		Mortgage Loan Foreclosure Filings	
	Colorado Springs MSA			Colorado Springs MSA		El Paso County		El Paso County		City of Colorado Springs			El Paso County		Colorado Springs MSA		El Paso County	
	Monthly Total	Monthly Change	12 Month Moving Average at an Annual Rate	Monthly %	12 Month Moving Average	Monthly Total	12 Month Moving Average at an Annual Rate	Monthly Total	12 Month Moving Average at an Annual Rate	Monthly Total Sales Tax Revenue (Equivalent 2% Rate)	Monthly Total Taxable Retail Sales (in millions)	12 Month Moving Average at an Annual Rate	Monthly %	12 Month Moving Average %	Monthly Total	12 Month Moving Average	Monthly Total	12 Month Moving Average
Apr-05	250,200	2,200	4,100	5.6%	5.7%	532	5,339	1,632	25,517	\$8,935,057	\$447	\$5,335	59.3%	59.4%	252	325	200	187
May-05	252,800	2,600	4,200	5.4%	5.7%	463	5,227	1,645	25,055	\$8,290,021	\$415	\$5,344	61.6%	59.5%	262	332	186	191
Jun-05	255,700	2,900	4,200	5.7%	5.6%	499	5,256	1,907	24,585	\$8,697,593	\$435	\$5,343	75.2%	59.4%	311	339	179	190
Jul-05	254,400	-1,300	5,300	5.4%	5.6%	487	5,335	2,330	24,611	\$10,062,998	\$503	\$5,341	82.8%	59.5%	231	330	154	187
Aug-05	255,300	900	4,200	5.1%	5.6%	482	5,376	3,218	25,733	\$9,343,828	\$467	\$5,353	73.5%	59.6%	288	335	182	187
Sep-05	255,600	300	5,000	5.2%	5.5%	398	5,423	2,265	25,416	\$9,375,041	\$469	\$5,375	68.9%	59.7%	184	327	202	189
Oct-05	256,100	500	5,700	4.8%	5.5%	345	5,366	2,099	25,248	\$9,808,479	\$490	\$5,388	59.6%	59.7%	296	328	211	190
Nov-05	257,100	1,000	6,500	5.0%	5.5%	386	5,390	1,769	24,924	\$8,576,503	\$429	\$5,396	47.3%	59.8%	360	329	157	189
Dec-05	257,900	800	5,800	4.9%	5.4%	334	5,319	1,677	24,215	\$8,595,278	\$430	\$5,407	37.3%	59.7%	337	321	235	190
Jan-06	252,300	-5,600	6,900	5.1%	5.3%	348	5,235	1,926	23,959	\$11,463,733	\$573	\$5,404	42.7%	59.4%	259	315	158	188
Feb-06	253,600	1,300	7,100	4.9%	5.3%	356	5,115	1,557	23,930	\$7,797,383	\$390	\$5,428	55.9%	59.6%	262	306	200	189
Mar-06	256,000	2,400	8,000	4.9%	5.2%	418	5,048	2,032	24,057	\$8,052,452	\$403	\$5,450	56.1%	60.0%	305	279	224	191
Apr-06	257,600	1,600	7,400	4.5%	5.1%	388	4,904	1,755	24,180	\$9,686,053	\$484	\$5,487	55.9%	59.7%	243	278	201	191
May-06	261,100	3,500	8,300	4.4%	5.0%	346	4,787	2,198	24,733	\$8,942,069	\$447	\$5,520	62.5%	59.8%	271	279	256	197
Jun-06	263,900	2,800	8,200	4.9%	4.9%	302	4,590	2,047	24,873	\$9,414,773	\$471	\$5,556	73.9%	59.7%	218	271	231	201
Jul-06	258,800	-5,100	4,400	4.9%	4.9%	255	4,358	1,698	24,241	\$10,597,422	\$530	\$5,583	76.0%	59.1%	283	276	200	205
Aug-06	259,500	700	4,200	4.7%	4.9%	298	4,174	2,266	23,289	\$9,328,089	\$466	\$5,582	69.3%	58.8%	275	274	255	211
Sep-06	259,400	-100	3,800	4.4%	4.8%	219	3,995	2,104	23,128	\$9,963,943	\$498	\$5,611	65.6%	58.5%	251	280	192	210
Oct-06	259,300	-100	3,200	4.1%	4.7%	188	3,838	2,034	23,063	\$9,884,621	\$494	\$5,615	60.6%	58.6%	325	282	189	208
Nov-06	259,900	600	2,800	4.3%	4.7%	152	3,604	1,749	23,043	\$8,461,387	\$423	\$5,609	48.8%	58.7%	385	285	268	217
Dec-06	260,500	600	2,600	4.1%	4.6%	149	3,419	1,507	22,873	\$8,502,182	\$425	\$5,605	35.5%	58.6%	306	282	180	213
Jan-07	253,700	-6,800	1,400	4.6%	4.6%	191	3,262	2,122	23,069	\$11,210,404	\$561	\$5,592	40.8%	58.4%	451	298	238	220
Feb-07	254,800	1,100	1,200	4.4%	4.5%	179	3,085	1,743	23,255	\$8,022,403	\$401	\$5,603	54.4%	58.3%	269	299	265	225
Mar-07	257,600	2,800	1,600	4.1%	4.5%	264	2,931	1,958	23,181	\$8,111,872	\$406	\$5,606	55.8%	58.3%	308	299	325	233
Apr-07	259,000	1,400	1,400	3.8%	4.4%	257	2,800	1,977	23,403	\$10,396,644	\$520	\$5,642	54.5%	58.1%	294	303	307	242
May-07	262,200	3,200	1,100	3.7%	4.3%	242	2,696	1,971	23,176	\$8,345,970	\$417	\$5,612	62.4%	58.1%	242	301	296	246
Jun-07	264,900	2,700	1,000	4.3%	4.3%	231	2,625	1,897	23,026	\$9,425,379	\$471	\$5,613	75.2%	58.2%	252	303	275	249
Jul-07	262,400	-2,500	3,600	4.3%	4.2%	173	2,543	2,031	23,359	\$10,513,821	\$526	\$5,608	77.1%	58.3%	273	303	295	257
Aug-07	263,800	1,400	4,300	4.1%	4.2%	171	2,416	2,380	23,473	\$9,857,071	\$493	\$5,635	77.3%	59.0%	250	301	306	261
Sep-07	264,000	200	4,600	4.2%	4.2%	118	2,315	1,969	23,338	\$9,721,525	\$486	\$5,623	69.3%	59.3%	208	297	260	267
Oct-07	262,800	-1,200	3,500	4.1%	4.2%	112	2,239	2,207	23,511	\$10,149,545	\$507	\$5,636	59.9%	59.3%	316	296	304	277
Nov-07	264,000	1,200	4,100	4.4%	4.2%	115	2,202	1,626	23,388	\$9,499,149	\$475	\$5,688	49.9%	59.3%	321	291	229	273
Dec-07	262,600	-1,400	2,100	4.6%	4.2%	82	2,135	1,545	23,426	\$9,117,546	\$456	\$5,719	35.8%	59.4%	591	315	456	296
Jan-08	255,600	-7,000	1,900	5.3%	4.3%	121	2,065	2,149	23,453	\$11,534,134	\$577	\$5,735	40.5%	59.3%	451	315	271	299
Feb-08	257,000	1,400	2,200	5.2%	4.3%	102	1,988	1,537	23,247	\$7,724,244	\$386	\$5,720	50.2%	59.0%	331	320	457	315
Mar-08	258,200	1,200	600	5.5%	4.5%	136	1,860	1,633	22,922	\$8,009,765	\$400	\$5,715	47.3%	58.3%	281	318	488	329
Apr-08	258,600	400	-400	4.9%	4.6%	134	1,737	1,791	22,736	\$9,539,376	\$477	\$5,672	57.5%	58.5%	295	318	480	343
May-08	261,800	3,200	-400	5.0%	4.7%	180	1,675	1,457	22,222	\$8,387,784	\$419	\$5,674	63.9%	58.7%	407	331	372	349
Jun-08	262,600	800	-2,300	5.7%	4.8%	97	1,541	1,848	22,173	\$9,225,992	\$461	\$5,664	73.6%	58.5%	273	333	462	365
Jul-08	259,900	-2,700	-2,500	5.8%	4.9%	108	1,476	1,672	21,814	\$9,772,605	\$489	\$5,627	77.6%	58.6%	318	337	360	370
Aug-08	260,300	400	-3,500	5.6%	5.0%	77	1,382	1,764	21,198	\$9,535,636	\$477	\$5,611	74.4%	58.3%	371	347	253	366
Sep-08	259,200	-1,100	-4,800	5.6%	5.1%	97	1,361	1,745	20,974	\$9,156,600	\$458	\$5,583	66.2%	58.1%	421	365	256	366
Oct-08	258,900	-300	-3,900	5.9%	5.3%	69	1,318	1,469	20,236	\$9,237,036	\$462	\$5,537	58.3%	57.9%	486	379	449	378
Nov-08	257,400	-1,500	-6,600	6.2%	5.4%	55	1,258	1,089	19,699	\$8,306,866	\$415	\$5,477	41.4%	57.2%	721	412	325	386
Dec-08	255,500	-1,900	-7,100	7.0%	5.6%	43	1,219	1,104	19,258	\$7,806,974	\$390	\$5,412	33.8%	57.1%	770	427	423	383
Jan-09	248,300	-7,200	-7,300	8.5%	5.9%	66	1,164	1,192	18,301	\$10,387,836	\$519	\$5,355	36.8%	56.8%	624	442	357	390
Feb-09	248,600	300	-8,400	8.9%	6.2%	53	1,115	974	17,738	\$7,016,909	\$351	\$5,319	49.2%	56.7%	596	464	450	390
Mar-09	248,100	-500	-10,100	9.1%	6.5%	71	1,050	1,149	17,254	\$7,440,489	\$372	\$5,291	49.0%	56.8%	864	512	486	389
Apr-09	248,100	0	-10,500	8.7%	6.8%	75	991	1,141	16,604	\$8,671,804	\$434	\$5,247	52.0%	56.4%	554	534	539	394
May-09	250,500	2,400	-11,300	8.9%	7.2%	108	919	862	16,009	\$7,497,118	\$375	\$5,203	56.0%	56.0%	681	557	468	402
Jun-09	250,900	400	-11,700	9.6%	7.5%	146	968	1,212	15,373	\$8,379,492	\$419	\$5,160	73.4%	55.9%	555	580	380	396
Jul-09	248,300	-2,600	-11,600	9.2%	7.8%	116	976	1,163	14,864	\$8,740,038	\$437	\$5,109	79.2%	56.1%	512	596	530	410
Aug-09	248,800	500	-11,500	8.8%	8.0%	111	1,010	1,220	14,320	\$8,921,175	\$446	\$5,078	73.8%	56.0%	464	604	444	426
Sep-09	248,300	-500	-10,900	8.6%	8.3%	97	1,010	1,485	14,060	\$8,756,810	\$438	\$5,058	69.9%	56.3%	488	610	453	442
Oct-09	248,100	-200	-10,800	8.7%	8.5%	105	1,046	1,345	13,936	\$9,161,517	\$458	\$5,054	57.1%	56.2%	619	621	434	441
Nov-09	248,000	-100	-9,400	8.7%	8.7%	67	1,058	1,269	14,116	\$8,430,104	\$422	\$5,061	44.6%	56.5%	705	619	370	445
Dec-09	247,300	-700	-8,200	9.3%	8.9%	88	1,103	1,329	14,341	\$8,005,646	\$400	\$5,070	33.6%	56.5%	617	607	560	456
Jan-10	240,900	-6,400	-7,400	10.2%	9.1%	95	1,132	1,230	14,379	\$11,096,351	\$555	\$5,106	44.0%	57.1%	563	602	365	457
Feb-10	241,900	1,000	-6,700	10.1%	9.2%	166	1,245	943	14,348	\$7,349,328	\$367	\$5,122	48.1%	57.0%	498	593	376	450
Mar-10	243,100	1,200	-5,000	10.3%	9.3%	150	1,324	1,083	14,282	\$7,692,215	\$385	\$5,135	51.7%	57.2%	490	562	470	449
Apr-10	245,200	2,100	-2,900	9.5%	9.3%	127	1,376	1,305	14,446	\$9,145,714	\$457	\$5,159	56.0%	57.6%	428	552	477	444

MO-YR	Wage and Salary Job Growth			Unemployment Rate		Single Family Construction		New Auto and Truck Registrations		Taxable Retail Sales			Hotel Occupancy Rate		Initial Claims for Unemployment		Mortgage Loan Foreclosure Filings	
	Colorado Springs MSA			Colorado Springs MSA		El Paso County		El Paso County		City of Colorado Springs			El Paso County		Colorado Springs MSA		El Paso County	
	Monthly Total	Monthly Change	12 Month Moving Average at an Annual Rate	Monthly %	12 Month Moving Average	Monthly Total	12 Month Moving Average at an Annual Rate	Monthly Total	12 Month Moving Average at an Annual Rate	Monthly Total Sales Tax Revenue (Equivalent 2% Rate)	Monthly Total Taxable Retail Sales (in millions)	12 Month Moving Average at an Annual Rate	Monthly %	12 Month Moving Average %	Monthly Total	12 Month Moving Average	Monthly Total	12 Month Moving Average
May-10	248,000	2,800	-2,500	9.3%	9.4%	135	1,403	1,192	14,776	\$8,263,458	\$413	\$5,197	68.1%	58.3%	533	539	382	437
Jun-10	248,900	900	-2,000	9.7%	9.4%	128	1,385	1,296	14,860	\$8,979,702	\$449	\$5,227	77.7%	58.7%	396	526	350	434
Jul-10	247,200	-1,700	-1,100	9.7%	9.4%	110	1,379	1,362	15,059	\$10,474,019	\$524	\$5,314	82.7%	58.9%	372	514	353	420
Aug-10	248,100	900	-700	9.5%	9.5%	118	1,386	1,481	15,320	\$9,076,803	\$454	\$5,322	77.0%	59.2%	469	515	427	418
Sep-10	247,600	-500	-700	9.2%	9.5%	81	1,370	1,309	15,144	\$9,496,547	\$475	\$5,359	72.6%	59.4%	383	506	377	412
Oct-10	247,900	300	-200	9.2%	9.6%	102	1,367	1,279	15,078	\$9,889,850	\$494	\$5,395	63.3%	60.0%	519	498	389	408
Nov-10	248,100	200	100	9.6%	9.6%	96	1,396	1,256	15,065	\$8,938,706	\$447	\$5,420	48.6%	60.3%	582	488	430	413
Dec-10	247,700	-400	400	9.4%	9.6%	100	1,408	1,351	15,087	\$8,625,448	\$431	\$5,451	39.6%	60.8%	516	479	432	402
Jan-11	243,200	-4,500	2,300	10.7%	9.7%	81	1,394	1,316	15,173	\$11,404,258	\$570	\$5,467	43.4%	60.7%	540	477	411	406
Feb-11	244,300	1,100	2,400	10.5%	9.7%	65	1,293	1,075	15,305	\$7,645,473	\$382	\$5,482	50.3%	60.9%	443	473	288	399
Mar-11	245,800	1,500	2,700	10.1%	9.7%	138	1,281	1,523	15,745	\$7,756,366	\$388	\$5,485	56.8%	61.3%	454	470	272	382
Apr-11	248,600	2,800	3,400	9.1%	9.7%	136	1,290	1,431	15,871	\$9,863,991	\$493	\$5,521	59.0%	61.6%	417	469	276	366
May-11	250,900	2,300	2,900	9.3%	9.7%	127	1,282	1,353	16,032	\$9,000,869	\$450	\$5,558	66.8%	61.5%	502	466	254	355
Jun-11	252,500	1,600	3,600	9.8%	9.7%	131	1,285	1,555	16,291	\$9,171,346	\$459	\$5,567	80.8%	61.7%	368	464	242	346
Jul-11	249,900	-2,600	2,700	9.6%	9.7%	138	1,313	1,063	15,992	\$10,529,110	\$526	\$5,570	89.2%	62.3%	377	464	238	336
Aug-11	251,200	1,300	3,100	9.3%	9.7%	117	1,312	2,109	16,620	\$10,160,112	\$508	\$5,624	77.8%	62.4%	360	455	334	329
Sep-11	251,400	200	3,800	8.6%	9.6%	124	1,355	1,446	16,757	\$9,690,235	\$485	\$5,634	76.5%	62.7%	347	452	300	322
Oct-11	252,200	800	4,300	8.6%	9.6%	139	1,392	1,740	17,218	\$10,205,848	\$510	\$5,650	59.0%	62.3%	484	449	338	318
Nov-11	251,500	-700	3,400	8.7%	9.5%	122	1,418	1,282	17,244	\$8,979,550	\$449	\$5,652	47.7%	62.2%	459	439	289	306
Dec-11	247,800	-3,700	100	9.0%	9.4%	80	1,398	1,827	17,720	\$8,573,414	\$429	\$5,649	38.6%	62.2%	497	437	361	300
Jan-12	243,300	-4,500	100	9.6%	9.4%	85	1,402	2,035	18,439	\$12,500,186	\$625	\$5,704	44.0%	62.2%	468	431	285	290
Feb-12	245,600	2,300	1,300	9.4%	9.3%	110	1,447	1,589	18,953	\$7,805,280	\$390	\$5,712	53.3%	62.5%	360	424	301	291
Mar-12	247,100	1,500	1,300	9.5%	9.2%	172	1,481	1,512	18,942	\$8,659,290	\$433	\$5,757	54.1%	62.2%	561	433	275	291
Apr-12																		
May-12																		
Jun-12																		
Jul-12																		
Aug-12																		
Sep-12																		
Oct-12																		
Nov-12																		
Dec-12																		
Jan-13																		